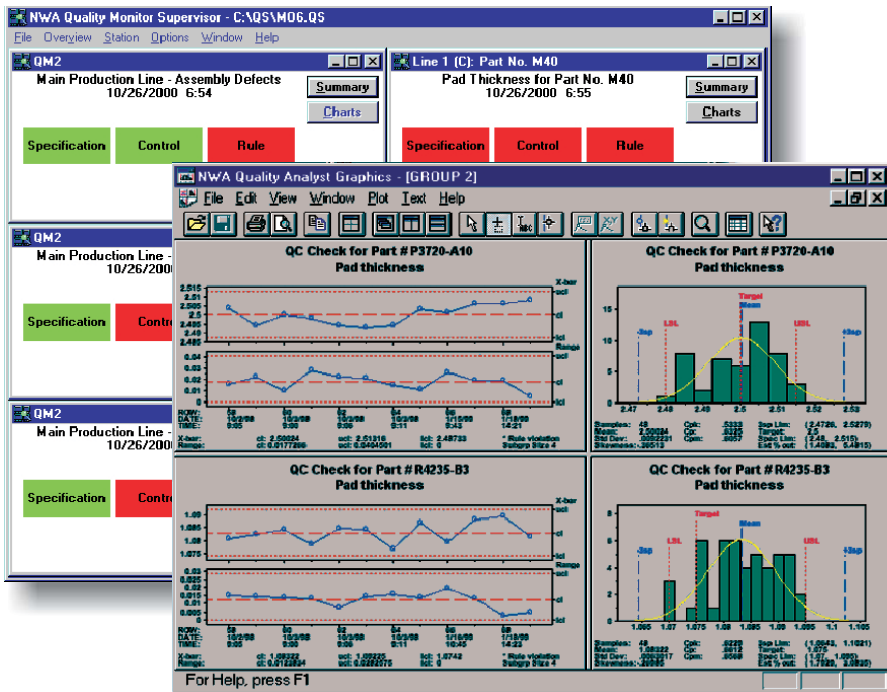




Quality Monitor Supervisor™

Monitoring Plant-Floor Data-Collection Workstations



- Monitor the status of multiple data-collection workstations in real time
- Identify plant-floor problems as they occur
- Tailor supervisory screens to each user's needs
- View charts on demand from any Quality Monitor workstation

NWA Quality Monitor Supervisor is used by leading world-class manufacturers to remotely monitor and supervise the performance of multiple plant-floor data-collection workstations.

Flexibility in Display Design

Quality Monitor Supervisor lets you retrieve and display control charts from any Quality Monitor workstation. You can choose which charts to display and how to arrange them on your screen.

Flexibility and Power in Reporting

Quality Monitor Supervisor lets you compare current and past plant-floor conditions. You can easily compare morning and afternoon data, or data from different shifts, to identify possible process changes.

Product Overview

NWA Quality Monitor Supervisor™ creates a single, unified view into multiple plant-floor data-collection workstations. It lets you remotely oversee the status of multiple NWA Quality Monitor® data-collection workstations from your PC. Visual alarms and on-demand SPC charts keep you on top of your current plant-floor conditions. Quality Monitor Supervisor is used by leading world-class manufacturers to remotely monitor and supervise the performance of multiple plant-floor data-collection workstations to more proactively manage processes and prevent problems before they result in scrap, waste, and lower product quality.

Constant Connection to Your Plant Floor

Quality Monitor Supervisor delivers near real-time reporting of summary information, SPC charts, and visual alarms in a unified view from any number of Quality Monitor data-collection workstations, so you stay updated and connected to your plant floor.

View Broad Plant Overview or Specific Workstation Details

Quality Monitor Supervisor lets you continuously view key control charts from one or more Quality Monitor workstations, or drill in for a more detailed analysis of any workstation of concern. This allows you to focus on specific areas for closer monitoring, or to get a broad view of the entire plant.

Take Control of Your Production

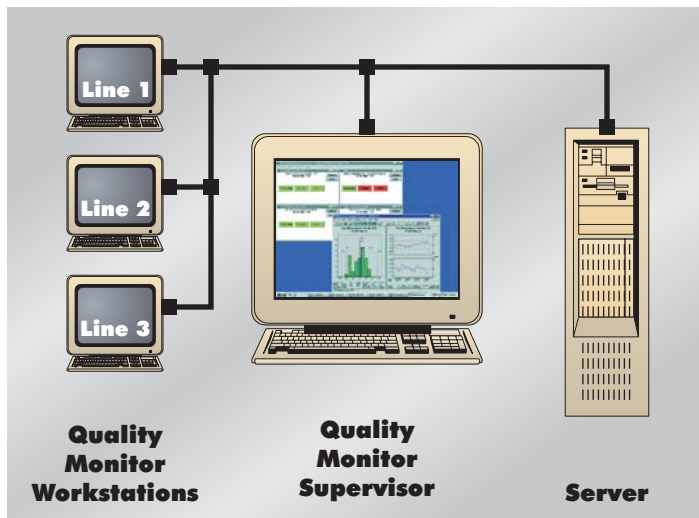
NWA Quality Monitor Supervisor™ lets you monitor any number of NWA Quality Monitor® data-collection workstations from a central PC with a simple, easy-to-read status window. The status windows lets you see, at a glance, which stations are active and which are not. In addition, color-coded indicators alert you to any out-of-control points, out-of-specification conditions, and pattern rule violations as they occur.

Tailor Status Display to Meet Your Monitoring Needs

Quality Monitor Supervisor has several display formats that let you tailor a consolidated view of the status of multiple workstations to meet your unique process-monitoring needs. The multi-window and line status formats let you monitor multiple workstations simultaneously, while the array and single-indicator formats let you conserve screen space. Quality Monitor Supervisor offers the flexibility to customize your status display for use both on and off the plant floor to meet the unique monitoring requirements of different users and an unlimited number of workstations.

Create a Plant-Floor Data-Collection and Monitoring Solution

NWA Quality Monitor Supervisor integrates with NWA Quality Monitor and NWA Quality Analyst to create a data-collection and monitoring solution that automates plant-floor data collection, notifies you of potential problems in processes, delivers SPC charts and reports,

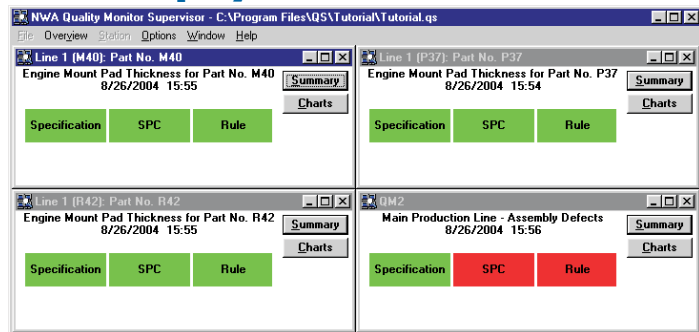


The combination of Quality Monitor Supervisor with Quality Monitor Workstations creates a powerful tool to help you stay on top of your plant-floor activities.

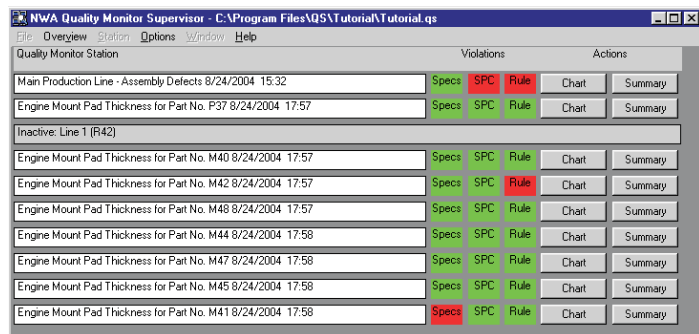
©2004 Northwest Analytical, Inc., all rights reserved. NWA Quality Monitor, and NWA Quality Monitor Supervisor are trademarks or registered trademarks of Northwest Analytical. *All other company and product names may be trademarks or registered trademarks of those respective companies. All specifications within this document are subject to change without notice.

and provides a consolidated view of the status of multiple data-collection workstations. This solution delivers near real-time monitoring that lets you proactively manage your manufacturing processes, and prevent process problems before they result in scrap, waste, and lower product quality.

Status Display Formats



The multi-window status display creates a simple view of the status of multiple workstations that you can see from several feet away.



The list status display makes it easy to monitor a large number of workstations all in one screen.



The array status display groups workstation status indicator buttons, offering additional flexibility in screen design.



The single indicator display places a small system-wide alarm indicator on the desktop that provides a visual alert when any workstation violates an alarm condition. One click expands the indicator into one of the more detailed display formats.

System Requirements

- Windows* 95, 98, Me, NT4, 2000, XP, or Server 2003
- Any PC-based LAN (NT, Novell, etc.)