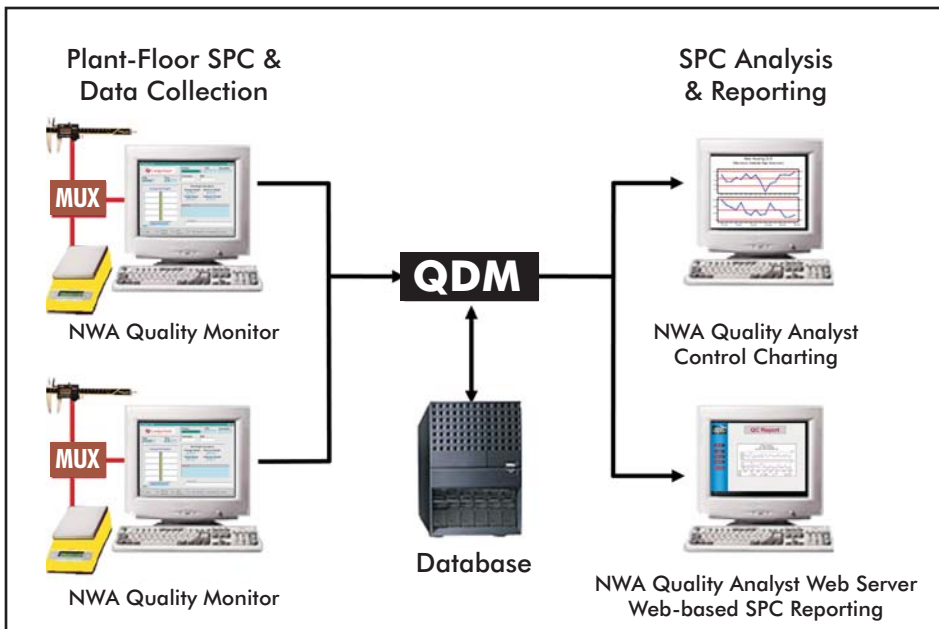


# Quality Data Manager

## SPC Database Configuration and Administration

*From the industry leaders in SPC software and manufacturing systems integration*



- Scalable, standards-based SPC data management system
- Fully integrated with NWA Quality Monitor®, NWA Quality Analyst®, and NWA Quality Analyst Web Server™
- Easy-to-use setup and maintenance tools
- Runs on industry standard Microsoft\* SQL Server
- Integrates easily with other information systems

### Product Overview

Quality Data Manager (QDM) is a database configuration tool that enables rapid and economical creation of a scalable, integratable, and maintainable SPC database.

With NWA SPC software and QDM, manufacturers can create quality databases configured to support a wide range of data collection and reporting environments. NWA Quality Analyst® and NWA Quality Analyst Web Server™ extract data from the database, increasing the visibility of quality data for improved process quality management and business decisions.

QDM will:

- Interface NWA SPC software directly to standard MS SQL databases, providing fully integrated storage for SPC data in an easy-to-manage database.

- Centralize SPC data in one place to create a scalable, integratable, and maintainable SPC system that is integrated with your plant-wide quality system.
- Start monitoring production and applying SPC without waiting for corporate database implementation.
- Reduce the demand on IT resources with an SPC database that is simple to use and easy to maintain.
- Provide data to Quality Analyst and Quality Analyst Web Server to increase the visibility of quality data for production, product and process metrics. Communicate quality analytics and metrics throughout the enterprise and supply chain.

The simple, standards-based QDM produces predictable and affordable system implementations without sacrificing capability, flexibility, or future expansion. ASECO's system integration capability and experience delivers a successful and timely completion.

*Quality Data Manager provides the database development and support tools to create and maintain a standard database structure for an integrated SPC database solution that runs on Microsoft SQL Server.*

## Setup and Maintenance Tools

QDM includes a set of tools that simplifies setup and on-going maintenance. These tools include:

### Characteristics Definition

Allows all quality characteristics (i.e., date, time, descriptions, measurements, defect counts) to be defined in one place, simplifying Data Set creation, management, and standardization.

### Data Set Designer

Automatically creates NWA Quality Analyst Data Sets and the SQL views that simplify data access.

### Standard SQL Views

All data in QDM is available through built-in SQL views, making it easy to access quality data with other applications without writing complex SQL queries. QDM data may be easily accessed by users with Excel, MS Access, Crystal Reports\*, and other applications without adding to the IT department workload.

## Foundation for a Scalable Integrated Quality System

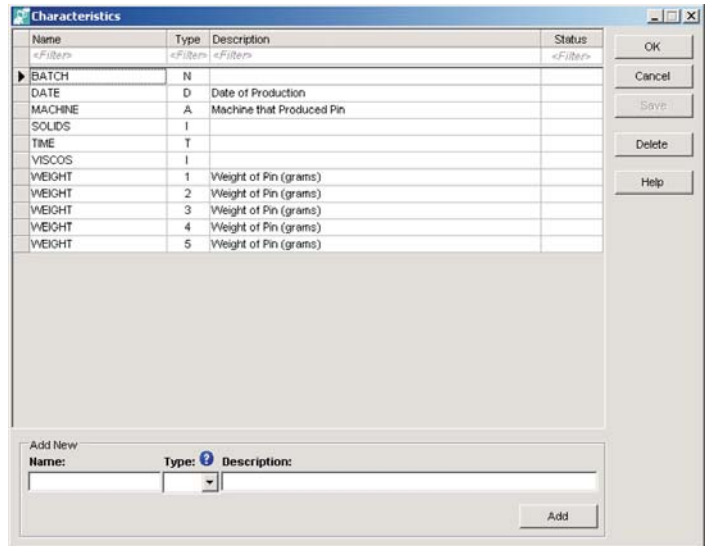
The combination of a simple, standards-based design and the broad experience and capabilities of ASECO make QDM an excellent starting point for a more comprehensive Quality Information System that integrates all quality data and reporting.

## Implementation and Integration of a Customized Database Structure

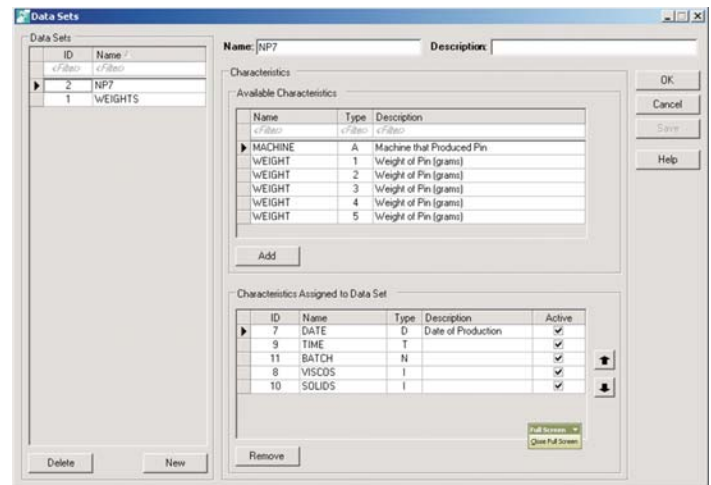
ASECO Integrated Systems, a leading manufacturing consultant and system integrator, is NWA's partner for applying the QDM tool. ASECO will configure a database to collect data from your NWA Quality Monitor® workstations and provide SPC reporting with NWA Quality Analyst® and NWA Quality Analyst Web Server™. The basic QDM is typically installed and configured in just two weeks. Tools are included that let you perform basic administration and management tasks, while additional integration work can be arranged with ASECO.

## System Requirements

QDM works with NWA Quality Analyst, NWA Quality Analyst Web Server, and NWA Quality Monitor. Requires MS SQL Server 2000, and SQL Server authentication must be available.



Create and maintain a master list of measurement, attribute, and descriptive variables using the Characteristics form.



Create Data Sets using the simple point-and-click interface of the Data Set form by assigning Variables from the master list.